



Welcome to..

**Spark design Ltd.
& SM International**

COMPANY PROFILE



Spark design ltd is a garment manufacturing (knit) factory & SM international unique buying management, sourcing agent, supplier and Inspection Company from Bangladesh. To maintain garments quality AQL system been followed or 100% garments inspection(pc to pc inspection) and conducting garments pass through needle detector machine to metal free protective zone to ensure free from metal hazardous. We apply our collective sourcing experience to make the best possible products at the best competitive price, in order to meet each of our customer's specific requirements. We purely focus on customer demands.

We offer to our customer a wide range of development expertise, best design intelligence and up-to-date market information. You can be assured you will feel the sourcing difference.

Spark Design Limited is a 100% export oriented Ready Made Garment (RMG) unit. It is under the membership of the Bangladesh Knitwear Manufacturers and Exporters Association (BKMEA).

The main products are...

- ➡ *T-Shirt, Polo Shirt, Shorts, Pajama Set Ladies tang top Vest, Rugby shirt, Hood jacket, Long Pant, Trouser, Girls Fancy, etc.*
- ➡ *Light or heavy weight Sweater/Pullover/ Cardigan/ casual Jacket/ Corduro/ Denim/ Long coat/full sleeve funnel and Denim Shirts / half full sleeve tee & polo jacquard products. etc.*
- ➡ *Men's-5 Pocket, Denim Pants, 5 Pocket Twill Pants, Work Wear, School Wear Denim & Twill Jackets, Cargo Shorts /pants, Chino Pants, Shirts, Quilting Jackets Swim wear Night Wear etc.*
- ➡ *Women's- Denim Skirt, Denim and Twill Ladies Pants, Denim & Twill Ladies Jackets etc.*
- ➡ *Boys & Girls-Boys Top Bottom Sets, Boys Denim & Twill Pants, Boys Cargo Shorts Boys Chino Pants, Girls Denim & Twill Pants, Girls Denim & Twill Skirts, Boys School Wear, Girls School Wear, etc.*



SERVICES

- *Business development*
- *Product development*
- *Design development*
- *Risk analysis at sample stage to minimize technical problem.*
- *Negotiation*
- *Price Quotation*
- *Order Projection*
- *Product Package received*
- *Time & Action Plan*
- *Production plan*
- *Pre-Production sampling*
- *Inventory/Procurement*
- *Production*
- *In line Inspection*
- *Quality Controlling*
- *Vessel Booking*
- *Final Inspection*
- *Shipment*
- *Commercialization*
- *Recording all documents & information for repeat order*
- *Further order development*
- *Profiling, Communication, introducing*

PC TO PC INSPECTION

- *Eye inspection(front & back)*
- *Measurement check*
- *Balance check(side seam, sleeve opening, sleeve, shoulder)*
- *Placket & button hole check*
- *Neck*
- *Shoulder(L-left side)*
- *Arm hole(L)(front & back)*
- *Opening(L) (top & inside)*
- *Side seam(L)*
- *Hem(top & inside)*
- *Side seam(R-right side)*
- *Opening(R) top & inside)*
- *Arm hole(R) (front & back)*
- *Shoulder(R)*
- *Inside eye inspection stitching check*
- *Finish*

KEY INFORMATION

- *Year of inception:
SM international 2009
& Spark design ltd 2019*
- *No of companies: 2*
- *Total sewing line: 6*
- *Total production floor space: 16800 ft*
- *Total workforce: 310
(Male female ratio: 32:68)*
- *Total sewing machines: 135*
- *Manufacturing business:
Readymade apparel,*
- *Annual production capacity:
1.8 million pcs of RMG(own factory)
Sourcing factory 5.0 million pcs*
- *Annual turnover: 3.4 million USD(own factory)*
- *Lead time: 10-17 weeks*

Quality

SM international ensures highest quality standards at every stage of the manufacturing process.



Testing

Physical Test

- All fabrics are tested in our in-house factory lab before cutting. (weight, shrinkage, fastness, pilling, twisting)
- Embellishments are tested by our in-house factory lab during pre-production stage and randomly in bulk production. (prints, embroidery sequence, studs, bow)

Chemical Test

- All of our products are produced in accordance with international chemical restrictions. We offer to test our products in any accredited international laboratories. We provide all test reports on request.

Quality Procedure

Material checking

- Raw material
- Finished material
- Accessories & trims checking and inventory

In-process

- Pilot Runs To Identify Potential Process Issues
- Pre-productions
- In-line Checking
- Review In-line Reports And Take Necessary Actions
- In-line Inspection
- Pre-inspection During Bulk
- Final Inspection
- Pc To Pc Inspectio (If Required)

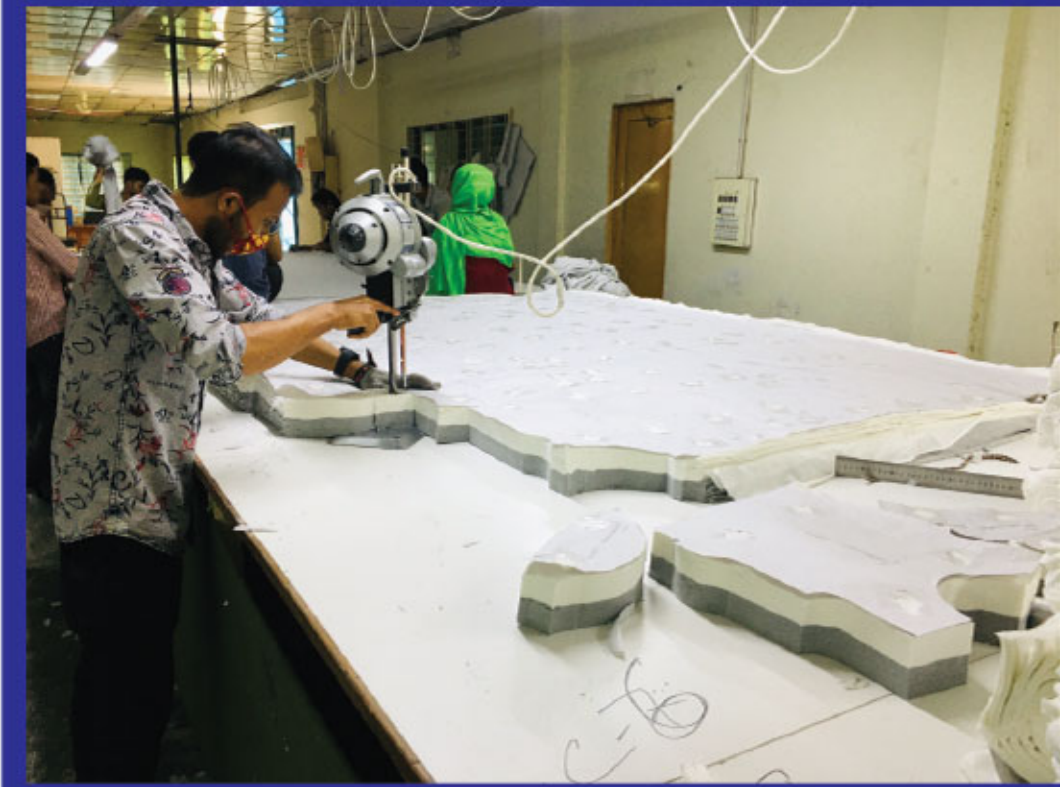
List of Machines

## List of Machines		[Year: 2019-2020]		
Sl.No	Machine Name	Brand	Section	Total Machine
1	Plain Machine	Brother	Sewing	35
2	Plain Machine	Juki	Sewing	10
3	Overlock Machine	Pegasus	Sewing	42
4	Overlock Machine	Kansai	Sewing	10
5	Salender bed Machine (Flat Lock)	Siruba	Sewing	19
6	Salender bed Machine (Flat Lock)	Juki	Sewing	6
7	Flat bed (Barning)	Pegasus	Sewing	3
8	Flat bed (Barning)	Yamato	Sewing	2
9	Rib Cutter Machine (PMD)	Kansai	Sewing	1
10	Button Hole Machine	Brother	Sewing	1
11	Bartak Machine	Juki	Sewing	1
12	Button Attach	Juki	Sewing	1
13	Rib Cutter Machine	Jakson	Sewing	1
14	Snap Button Machine	Dison	Sewing	2
15	Chain Stitch	Pegasus	Sewing	1
Grand Total				135



PHOTOS OF RUNNING PRODUCTION

CUTTING



PRINTING



SEWING -01



SEWING -02



FINISHING



READY TO SHIPMENT

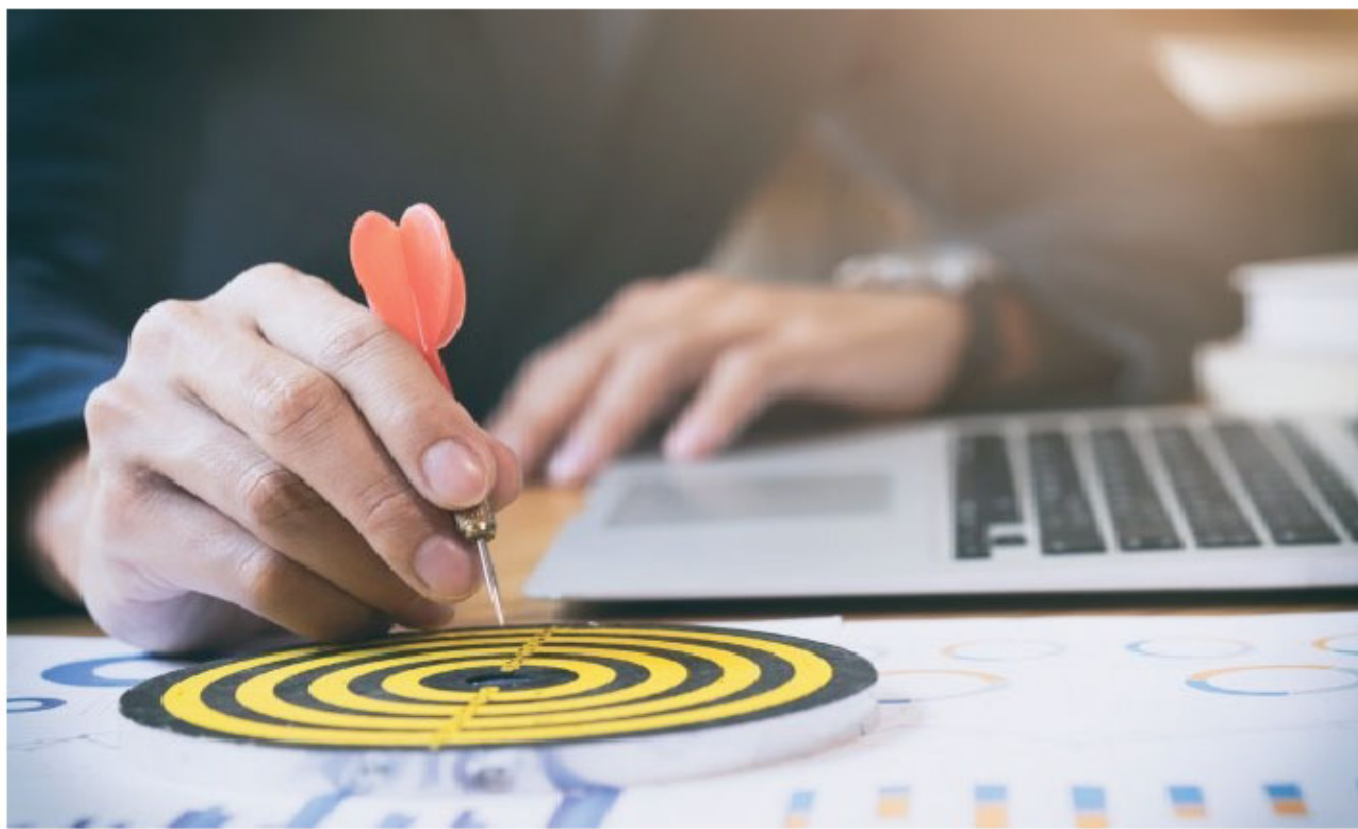


OUR PRODUCTS



MISSION & VISION

We are always in the same platform even in the time ahead with customers demand and catering our product as well as service at a level that optimize satisfaction at the same time all our efforts always aims to act in such a manner that ensure to safeguard the planet to be more habitable for the upcoming generation.



DEDICATED WORKFORCE: OUR CORE STRENGTH

We are having over 310 highly professional, technically sound, and dedicated workforces; who are the partner of our growth and member of the \ "Spark Design Family\ ". We are proud of them and taking care of its members during crucial periods and share happiness together in the good times. We are proud of our employees who have chosen to grow with us. Spark Design started as a family-owned company inspired by a powerful sense of enterprise. They have worked hard, contributed to the success, and in a sense have become part of the larger Spark Design family. This \ "family\ " takes care of its own during critical times and shares together in the good times. Through various social programs, it also reaches out to the greater society. Spark & SM is proud of its heritage, the business we have built, and the employees who built the company over the years.

BANK DETAILS

Premier Bank
service first



A/C NAME : **SPARK DESIGN LTD.**
Tongi Branch, Gazipur, Bangladesh
Swift No : PRMRBDDH

CONTACT US

SPARK DESIGN LTD. & SM INTERNATIONAL

Factory: 226/1, Bongobondu road, (Dobadiya road), Hellal market
Uttarkhan, Dhaka – 1230, Bangladesh

Cell: +880 1727 575125, +880 1822 233093

Email: saiful575125@gmail.com, saiful.is@gmail.com

www.sparkdesignbd.com

